



DREAM



 **DREAMCAB**

Durable, Roomy, Ergonomic, American Made Operator Cabin



MISSISSIPPI
MADE IN U.S.A.

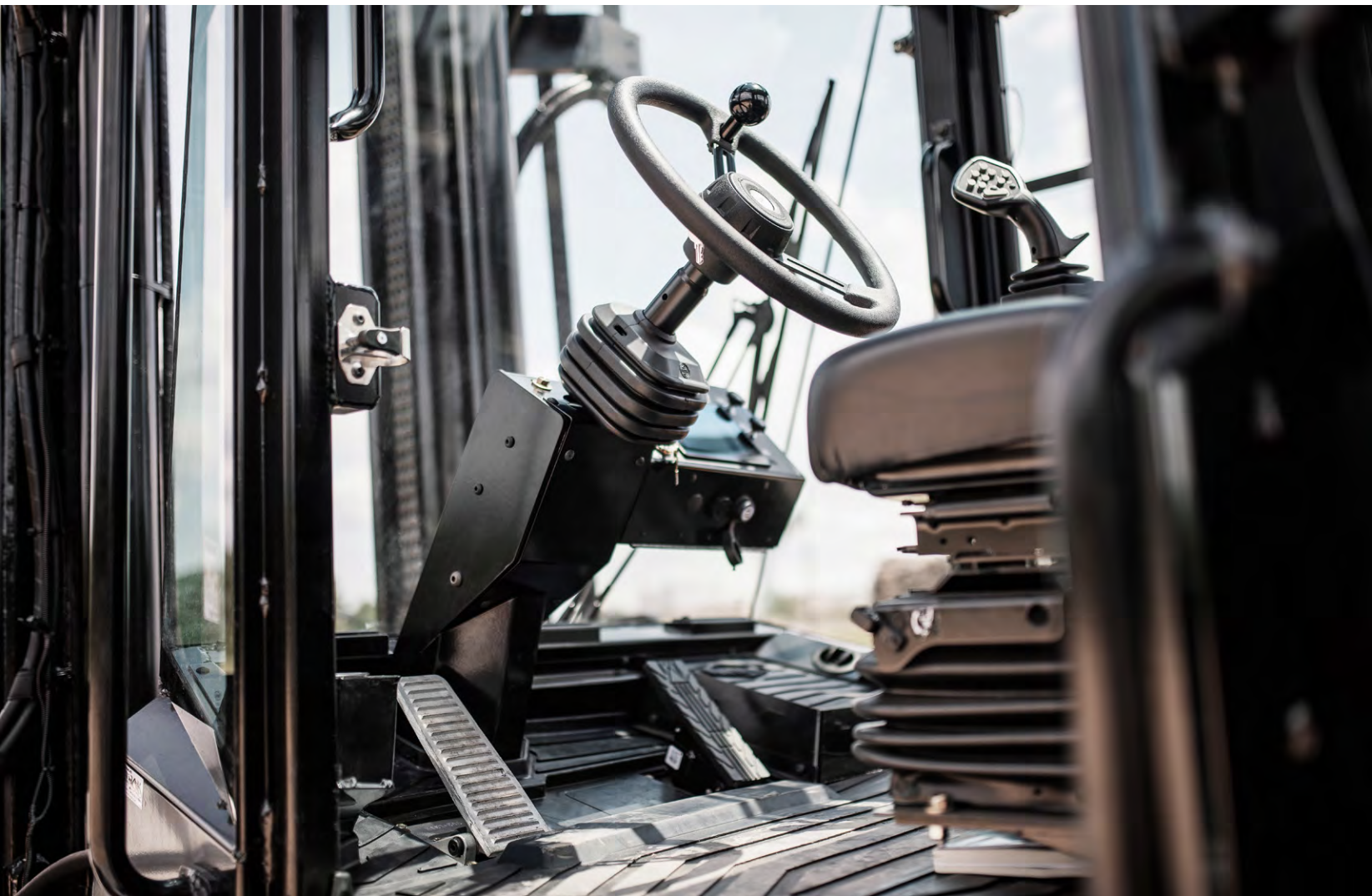
TAYLOR

 **DREAM**
DURABLE, ROOMY, ERGONOMIC, AMERICAN MADE

DESIGNED FOR THE OPERATOR

The newest generation of the DREAM cab combines durability, roominess, ergonomics, and visibility like never before. It is designed with more customer-inspired features and improvements while boasting the largest cabin area in the industry. Visibility is one of the key features of the DREAM cab. The visibility is substantially improved over other cabins with no loss in structural integrity. The TICS (Taylor Integrated Control System) is accessed via a 7-inch touchscreen. It is located in a small column mounted dash panel that puts powerful functionality at the operators fingertips, while enhancing his view. The custom-molded floor mat fits the contours perfectly for a more secure fit and aids in decreasing the noise level inside the cabin. A fully adjustable air-ride seat and ergonomically designed joystick control will provide operator comfort during those long work shifts.

Taylor always designs, engineers, and builds what you need. The DREAM cab is evidence of that founding philosophy... keep reading to find out more.



DESIGNED FOR COMFORT

The interior of the DREAM cab is an excellent example of form meeting function. Within this robust cabin, the operator has access to user-friendly ergonomic controls, high output HVAC system, and panoramic front and rear windshields that provide outstanding visibility.

The DREAM cab provides maximum cabin space, allowing operators ample space to move and adjust to suit their needs. The steering column has been moved forward and the seating area has been moved backward to allow for an extra 2-inches of legroom with even more room available by adjusting the seat. We have engineered the ability to change the operator seating area with the adjustable armrests that give the operator more options to fit their personal comfort needs. The armrests hinge up and out of the way to allow ingress/egress from either side of the machine. The comfortable air-ride/mechanical seat positions, combined with the low-mounted dash gives the operator a commanding view of the work area.

TEMPERED GLASS

Stronger and quieter than laminate and easily replaceable

CABIN AREA

Large, open work space with a modern, visually appealing design.

ENHANCED VISIBILITY

Panoramic front and rear windshields with 14% more visibility





SEATING COMFORT

Air-ride/mechanical seat with position adjustment forward/back, adjustable arm rests, and limited rotation.

COMFORT & CONTROL

The 14-button joystick control mounted to the adjustable armrest now includes a more comfortable proprietary design, integrated shifting (F/N/R) and is fully serviceable.

ENHANCED HVAC SYSTEM

One dedicated system for HVAC without the addition of standalone defrosters. The cab has twelve directional vents distributed evenly throughout the cabin. The forward vents are steel constructed.



CUP HOLDERS

The integrated cup holders are positioned down low near the door posts on both sides of the cab.

COMPACT DASH

The dash stand and console have been reduced in size for enhanced visibility and user friendly access.



FLOOR MAT

The form fitted, heavy duty floor mat, with heel-bump, accommodates various foot positioning. It also has the added benefit of thermal insulation and noise dampening.

CUSTOM HEADLINER

Custom molded, noise dampening headliner helps to distribute top cab climate control and features two clickable LED interior lights.



DOORS

The doors are fully accessible from both left and right sides of the cab due to the large 29-inch openings. The door latch/unlatch/lock-backs have been redesigned and placed within easy reach of the operator.

WINDOWS

The windows now have heavy-duty latches on a 4-position vertical sliding glass. A large overhead sky-view window with pull-shade available.





MISSISSIPPI
MADE IN U.S.A.

DREAM



WARNING

CAUTION
Lift capacity limited by load and distribution. Always use proper tie-down technique. Always use proper tie-down technique.

↑ TOP ↑
Dextive

DESIGNED FOR DURABILITY & SAFETY

Safety is the most crucial part of every Taylor lift truck. Our engineers designed the DREAM cab to exceed safety standards. Durable all-steel construction throughout the cabin provides a safer, more spacious, and more comfortable working environment. Large 1.25-inch handrails mounted on the pillars and doors aid in maintaining three points of contact while performing ingress and egress.

DURABILITY

TEMPERED GLASS

Four times stronger than an equivalent piece of laminated glass with the added advantage of having better sound reduction.

GREASEABLE HINGES

The door is substantially built, so it requires heavy-duty hinges. Each door features three bolt-on greaseable hinges.

HOLD-BACK LATCHES & BRACKETS

The door hold-back release mechanism inside the cab, is more accessible to the operator with less effort to release. The bolt-on, hold-back bracket is available in multiple angles.

DOOR HANDLES

Durable locking door handles secure the all steel reinforced doors. There are three release latches per door, two inside and one outside.

ROBUST HANDRAILS

Large 1.25-inch bolt-on handrails give the operator a more secure place to grab while entering and exiting the machine. With the door open, there are four handrails to provide optimal points of contact.

SAFETY



DROP TEST CERTIFIED

Promoting safety through the proper design, construction, application, operation, and maintenance of powered industrial trucks. (ANSI/ITSDF B56.1)



OPERATOR PRESENCE SWITCH (OPS)

The integrated seat switch will disable hydraulics/directional control until the operator is seated and belt fastened.



FORWARD & REAR VISIBILITY

All around enhanced operator visibility due to the panoramic front and rear windshields.



CONVEX MIRRORS

Wide angle convex mirrors, inside and outside of the cab, are standard on the DREAM Cab. There are multiple mirror options available to best suit any application.



LIGHT PACKAGES

The standard beacon lights are LED and side mounted. The upper corners of the cab have tapped castings to accommodate different lighting configurations.



OVERHEAD SKY-VIEW WINDOW

Super hard coated polycarbonate skylight provides great visibility, strength, and scratch resistance.

DESIGNED FOR EFFICIENCY

Like many other features in the DREAM cab, the proprietary 14-button joystick is designed with the operator and service personnel in mind. This multifunction joystick is precisely angled for optimal operator comfort and features an integrated hand support. The operator-facing pad features F/N/R directional controls, a horn button, and eight function control buttons. The reverse-facing side of the joystick has two more buttons for additional accessories when needed. The joystick button pad is field serviceable, reducing repair costs and downtime. (Also available is the Z-axis joystick option that features an additional “twist” function to control another accessory when needed.)

PROPRIETARY DESIGN

Designed specifically for the comfort and efficiency of the Taylor operator.

FULLY SERVICABLE

Each individual button is serviceable in the field.

COMFORTABLE REST

A handrest is formed into the handle to help reduce stress on the operator.





DESIGNED FOR INTEGRATION

TAYLOR INTEGRATED CONTROLS SYSTEM (TICS)

TICS is a vehicle electronic control system that provides integrated control of the electronic and hydraulic systems on the truck. The user-friendly interface gives customers the ability to customize operation parameters of their lift truck, perform diagnostics, and monitor key functions, including fuel consumption. The display indicates engine, transmission, hydraulic and emissions info as well as active warnings, fuel consumption, maintenance data, and pedestrian detection, when equipped with the Vision Plus™ option. The system also allows service personnel to access data needed during troubleshooting, such as sensor status and controller outputs.

TAYLOR TRAK PRO (Remote Fleet Management Telematics)

TaylorTrak Pro® hardware is integrated into your equipment, interacting with TICS to ensure your equipment is communicating with you. It enables comprehensive and flexible remote monitoring, asset tracking, maintenance scheduling and more, through WIFI or cellular network coverage based on your regional or work-site requirements.

Many options available, including, but not limited to, scale systems, tire pressure monitoring, and the Vision Plus™ Pedestrian Detection System. (see OPTIONS, UPGRADES & ACCESSORIES at the end of this brochure)

A Whole New Way

 **TAYLOR** INNOVATION *at its best.*

To See Your Work!





COMFORTSTEER

The **COMFORTSTEER** proprietary design allows the operator to easily and intuitively control the machine while gaining visibility.

The system eliminates the need for a forward console. Instead, it utilizes an electronic mini-wheel mounted to the adjustable armrest. The system monitors the travel speed and instantly adjusts the mini-wheel sensitivity to give the operator smooth control at any speed. Overall posture is a key benefit by helping to improve the operator's back, shoulder and arm position.



DREAMCAB
with
CLEAR-VU

The optional **CLEAR-VU** Cab has enhanced visibility features unlike any other cab available today.

The operator's field of view forward, from inside the cab, is open from floor to ceiling. The combination of the Ultra-VU mast and the CLEAR-VU operator station is a massive change in how the operator perceives his work area.

All the features on the dash panel are now fully integrated into the armrest within easy reach of the operator. Features like the ignition switch, push-button start, light switches, wiper control knobs, and the TICS display are all contained within the joystick console area.

(The Poly/Armor protective front and side glass shown here is available as an option to the standard tempered glass)

OPTIONS, UPGRADES & ACCESSORIES

The DREAM cab is a feature-packed design with lots of comforts, safety, and durability built in as standard. However, sometimes the operation requires more than the standard features.

So, how do you make an amazingly well-engineered cab even better? Lots of options, upgrades, and accessories, that's how!

With three versions of the DREAM cab available, choices are simply a must for some operations. Here you will find just a few of the available options from which to choose.

For even more information, contact your nearest Taylor Sales Representative.

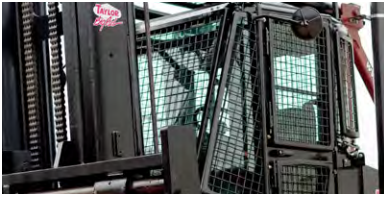
Applicable Cab:

DREAM cab (DC)

Clear-Vu (CV)

DREAM Open (DO)





CAB GLASS GUARDS

Vertical bars or mesh screen to help prevent debris impact. (front only or front and sides)

DC CV DO



SCREEN AND/OR VISOR

Sky-view pull screens and flip down sun visor for operator base with optional top glass.

DC CV ØØ



TOP WIPER

Top glass wiper with separate control switch for operator base with optional top glass.

DC CV ØØ



SEATING OPTIONS

Folding vinyl training seat. Cloth operator seat instead of the standard vinyl.

DC CV DO



RADIOS

Bluetooth AM/FM radio and/or CB radio

DC CV DO



PADDEL LEVERS

Paddle levers in lieu of the 14-button joystick.

DC CV DO



SPINNER KNOB

A spinner knob provides a secure way for users to turn a steering wheel with one arm.

DC CV DO



COLUMN SHIFTER

Column shifter is available in lieu of, or in combination with, joystick directional control.

DC CV DO



24/12 VOLT CONVERTER

External 24/12 volt converter for accessories, peripheral equipment and more.

DC CV DO



OPEN OPERATOR BASE

A more economical and open version of the DREAM cab design. (no doors, windows, etc.)

ØØ ØV DO



GLASS FOR OPEN OPERATOR BASE

Front, rear & top glass in lieu of full cab. (Poly-Armor protective glass also available)

ØØ CV DO



CONVEX MIRRORS

Interior and exterior wide-view convex mirrors provide optimal visibility to the operator.

DC CV DO



ADDITIONAL LED WORKLIGHTS

LED lights are brighter and more cost effective than incandescent or halogen bulbs.

DC CV DO



SAFETY LIGHTS

Blue Floor Spot Lights (front/rear), Elevated Beacon Light, and Green Seabeat Light

DC CV DO



VISION AID

Front and/or rear operator vision aid cameras and monitors

DC CV DO



TICS OPTIONS

Weight Scale, Impact Sensor, Ground Speed Limiter, Tire Pressure Monitor, and much more

DC CV DO



START CONTROL

TaylorTrak Access Start Control (Operator access control with daily checklist feature).

DC CV DO



VISION PLUS DETECTION SYSTEM

The next generation pedestrian detection system. Sensor-less, Tag-less Technology.

DC CV DO



you
can
depend
on
Big Red

